

Data sheet

Cat.7 cable connector

Page 1/6

P/N

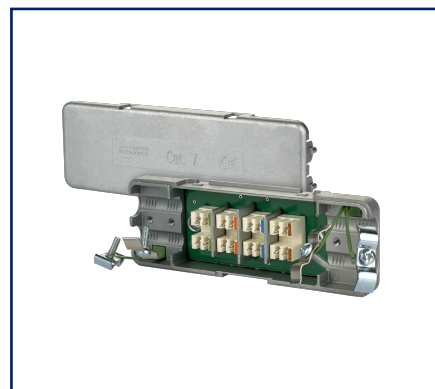
130863-E

EAN 4250184104193

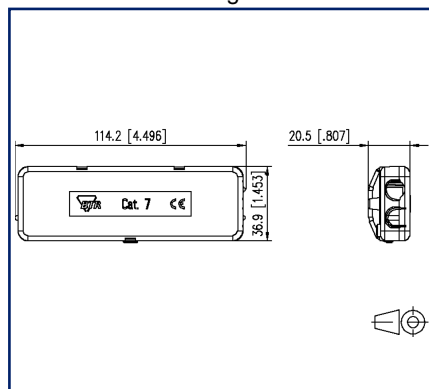
2025/05/12

Version: AI

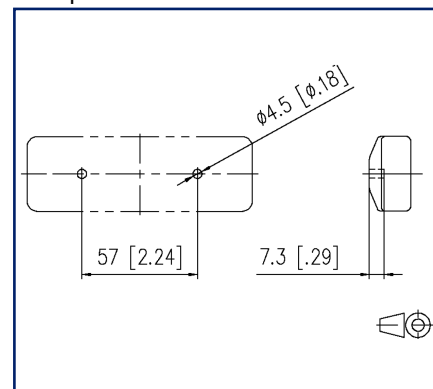
Illustrations



Dimensional drawing



Drill pattern



See enlarged drawings at the end of document

Product specification

- for connecting/extending data cables up to Cat.7_A
- in combination with Cat.6_A to Cat.8 cables and Cat.6_A connection technology, class E_A according to ISO/IEC 11801 is fulfilled
- connection of data lines AWG 26/1 to 22/1 (solid wire)
- cable feed from one or two sides
- cable sharing, i.e. splitting one 8-wire cable into two 4-wire cables (one cable tie required each on input and output side)
- fully shielded metal housing
- strain relief and separate captive 360° shield connection
- 2 bore holes for wall mounting
- IP67 protection due to special shrink tube



Data sheet

Cat.7 cable connector

Page 2/6

P/N
130863-E
EAN 4250184104193
2025/05/12
Version: AI

Technical Data

General Data

Mechanical measurement according to MICE	M1
Ingress measurement according to MICE	I1
Climatic measurement according to MICE	C1
Electromagnetic measurement according to MICE	E2
Design	cable connector
Shielding	shielded
Transmission technology	Copper
Color	metallike
Dimensions	
Dimension (L x W x H)	114.2 mm x 20.5 mm x 36.9 mm
Dimension (L x W x H)	4.496 in. x 0.807 in. x 1.453 in.

Transmission characteristics

Category (ISO)	7
Class (ISO/IEC)	E _A

Connections/interfaces

Connector technology interface 1	LSA terminal block
Connector technology interface 2	LSA terminal block
Number of ports interface 1	1
Number of ports interface 2	1
Number of equipped ports interface 1	1
Number of ports interface 2 equipped	1
Termination data, solid wire (min. - max.)	
Conductor cross section, solid wire	AWG 26/1 - AWG 22/1
Conductor cross section, solid wire	0.128 mm ² - 0.324 mm ²
Conductor diameter, solid wire (bare copper)	0.409 mm - 0.643 mm
Conductor diameter, solid wire (bare copper)	0.016 in. - 0.025 in.



Data sheet

Cat.7 cable connector

Page 3/6

P/N
130863-E
EAN 4250184104193
2025/05/12
Version: AI

Technical Data

Connections/interfaces

Cable sheath diameter (min. - max.)	
Cable sheath diameter	5.5 mm - 9.6 mm
Cable sheath diameter	0.197 in. - 0.354 in.
Cable access/outlet	from one or two sides
Reconnectibility	yes, if cross section is greater or the same

Electrical characteristics

Rated voltage	60 V
Through resistance	max. 5 mOhm
Insulation resistance	min. 100 MOhm
Dielectric strength conductor-conductor (primarily)	750 V DC

Materials and material properties

Material - Housing	GD-Zn
Halogen free	yes

Environmental conditions

Temperature (min. - max.)	
Temperature - Storage °C	-25 °C - 85 °C
Temperature - Storage °F	-13 °F - 185 °F
Temperature - Operating °C	-25 °C - 85 °C
Temperature - Operating °F	-13 °F - 185 °F
Shock	490 m/s ²

Classifications

ETIM 7.0	EC001121
ETIM 8.0	EC001121
ETIM 9.0	EC001121

Data sheet
Cat.7 cable connector

Page 4/6

P/N
130863-E
EAN 4250184104193
2025/05/12
Version: AI

Technical Data

Packing details

Type of packaging	1 pc(s) / plastic bag
Packaging unit - Weight (gram)	168 g
Packaging unit - Weight (pound)	0.37 lb
Packaging dimension	160 mm x 100 mm x 380 mm
Packaging dimension	6.299 in. x 3.937 in. x 14.961 in.

Application note

This product is a standard product of METZ CONNECT. METZ CONNECT is not aware of the specific intended use of the goods by the Customer or any customers of the Customer. The Customer guarantees that it has fully and sufficiently tested the use of the goods and any product modifications, product changes or product enhancements with regard to the specific intended use in accordance with the state of the art or in any other way. At METZ CONNECT's request, the Customer shall submit and make available meaningful evidence (e.g. test and laboratory protocols, certifications, etc.).



Data sheet

Cat.7 cable connector

Page 5/6

P/N

130863-E

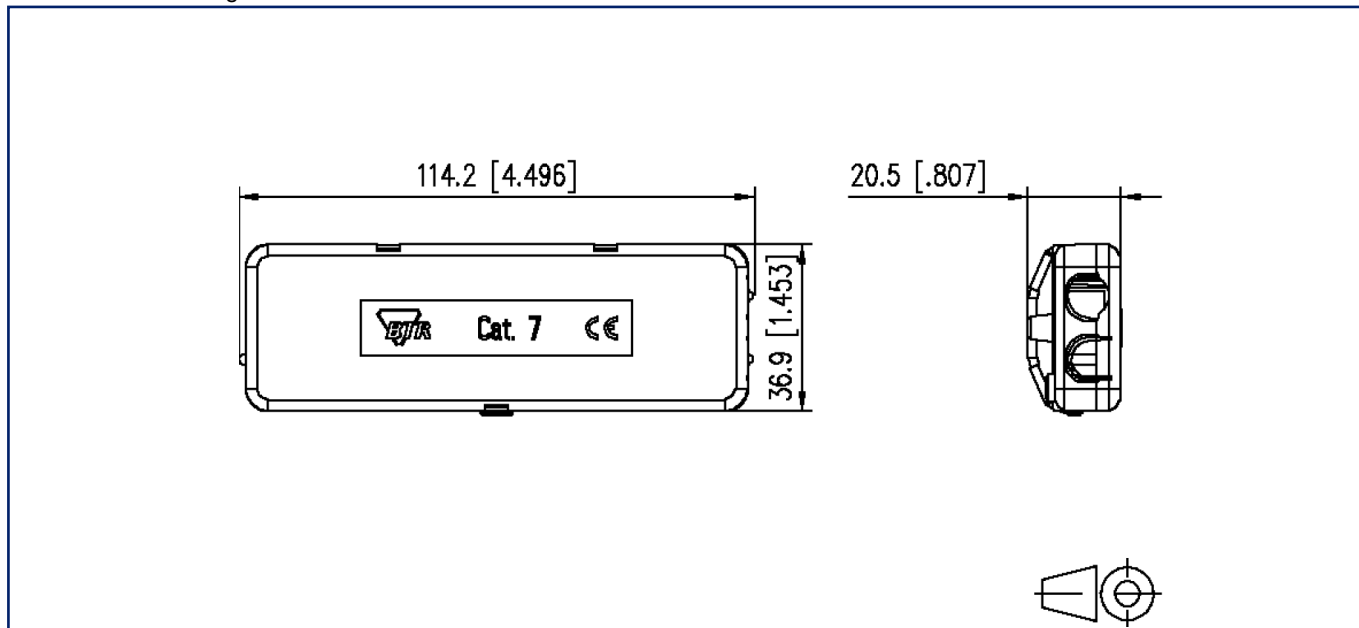
EAN 4250184104193

2025/05/12

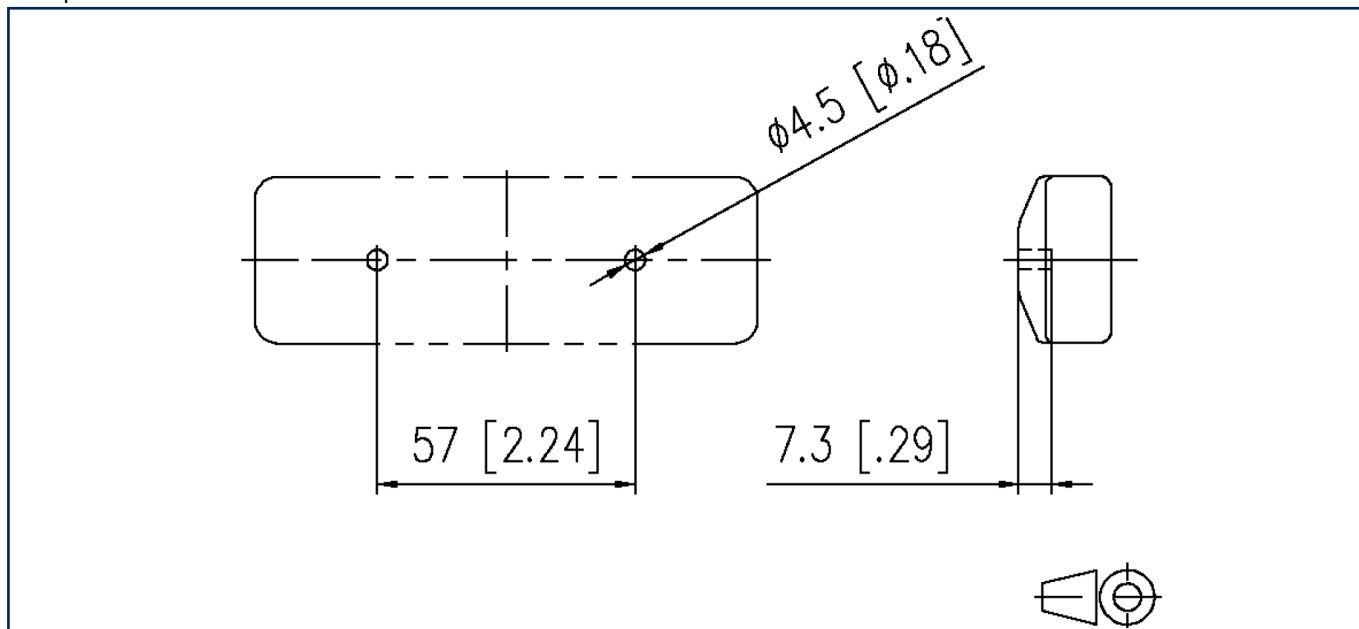
Version: AI

Illustrations

Dimensional drawing



Drill pattern



Data sheet

Page 6/6

Cat.7 cable connector

P/N

130863-E

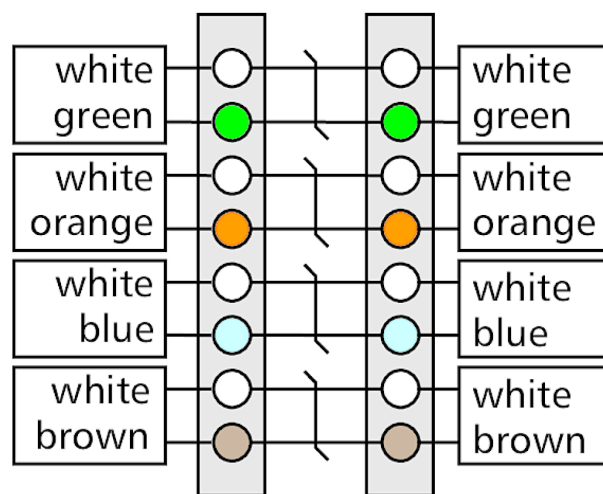
EAN 4250184104193

2025/05/12

Version: AI

Illustrations

Wiring diagram



S ○ — shield connection

