

Data sheet

RP03AxxHBLC Type 213

Page 1/6

P/N

312132xx

xx=number of poles

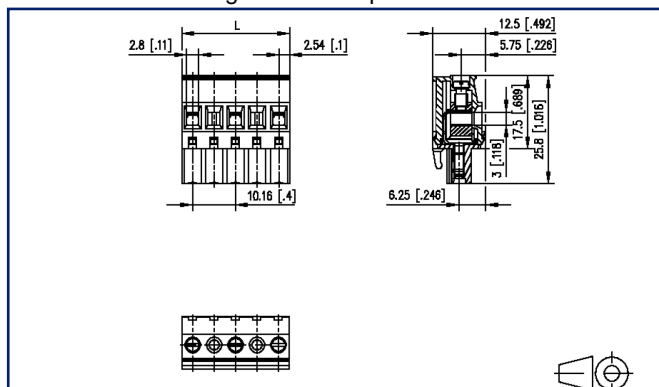
2025/04/29

Version: P

Illustrations



Dimensional drawing as an example



See enlarged drawings at the end of document

Product specification

- screw type terminal block, pluggable
- centerline 10.16 mm, direction of connection 90°
- lift system, fittable without loss of poles
- color black



Data sheet RP03AxxHBLC Type 213

Page 2/6

P/N
312132xx

xx=number of poles

2025/04/29

Version: P

Technical Data

General Data

Tightening torque SEV	0.5 Nm		
Tightening torque UL	4.4 lb-in		
min. number of poles	2		
max. number of poles	12		
Insulating material class	CTI 600		
clearance/creepage dist.	8.28 mm		
Protection category	IP20		
Insul. strip length	8 mm		
Rated current	12 A		
Overvoltage category	III	III	II
Pollution degree	3	2	2
Rated voltage	160 V	400 V	400 V
Rated test voltage	4 kV	4 kV	4 kV

Terminal data

rat.wiring solid AWGmax	0.08 mm ² - 4 mm ² / AWG 28 - AWG 12
rat.wiring strand.AWGmax	0.08 mm ² - 2.5 mm ² / AWG 28 - AWG 12

Approvals

extended wiring UL	2 AWG 16-18, or 1 AWG 16 stranded with 1 AWG 18 solid, or 1 AWG 16 stranded with 1 AWG 18 stranded
--------------------	--



V / A / AWG

600 / 16 / 28 - 12

approval UL - File No.

E121004



630 V / 6 kV / 13.5 A

Material

insulating material	PA66
flammability class	V0
contact material	CuSn
Contact surface	Sn
terminal body thread	M3
terminal body material	CuZnPb
terminal body surface	Ni



U | Contact

Data sheet

RP03AxxHBLC Type 213

Page 3/6

P/N

312132xx

xx=number of poles

2025/04/29

Version: P

Technical Data

screw thread	M3
screw material	8,8
screw surface	Zn Cr(VI)-frei/free
Glow-Wire Flammability GWFI	960 °C acc. to IEC 60695-2-12
Glow-Wire Flammability GWIT	775 °C acc. to IEC 60695-2-13

Climatic Data

upper limit temperature	105 °C
lower limit temperature	-40 °C

general

Tolerance	ISO 2768 -mH
-----------	--------------

Application note

This product is a standard product of METZ CONNECT. METZ CONNECT is not aware of the specific intended use of the goods by the Customer or any customers of the Customer. The Customer guarantees that it has fully and sufficiently tested the use of the goods and any product modifications, product changes or product enhancements with regard to the specific intended use in accordance with the state of the art or in any other way. At METZ CONNECT's request, the Customer shall submit and make available meaningful evidence (e.g. test and laboratory protocols, certifications, etc.).



U | Contact

Data sheet

RP03AxxHBLC Type 213

Page 4/6

P/N

312132xx

xx=number of poles

2025/04/29

Version: P

Accessories

P/N	Designation
700025-01-9	Coding star white with a group of 6 coding pins



U | Contact

Data sheet

RP03AxxHBLC Type 213

Page 5/6

P/N

312132xx

xx=number of poles

2025/04/29

Version: P

Counterpart

P/N	Designation
311782	PR06AxxHBBN Typ 178
311792	PR06AxxVBBN Typ 179
312192	PT11AxxVBEC Type 219
312202	PT11AxxVBBN Type 220
312292	PT11AxxHBEC Type 229
312302	PT11AxxHBBN Type 230



U | Contact

Data sheet

RP03AxxHBLC Type 213

Page 6/6

P/N

312132xx

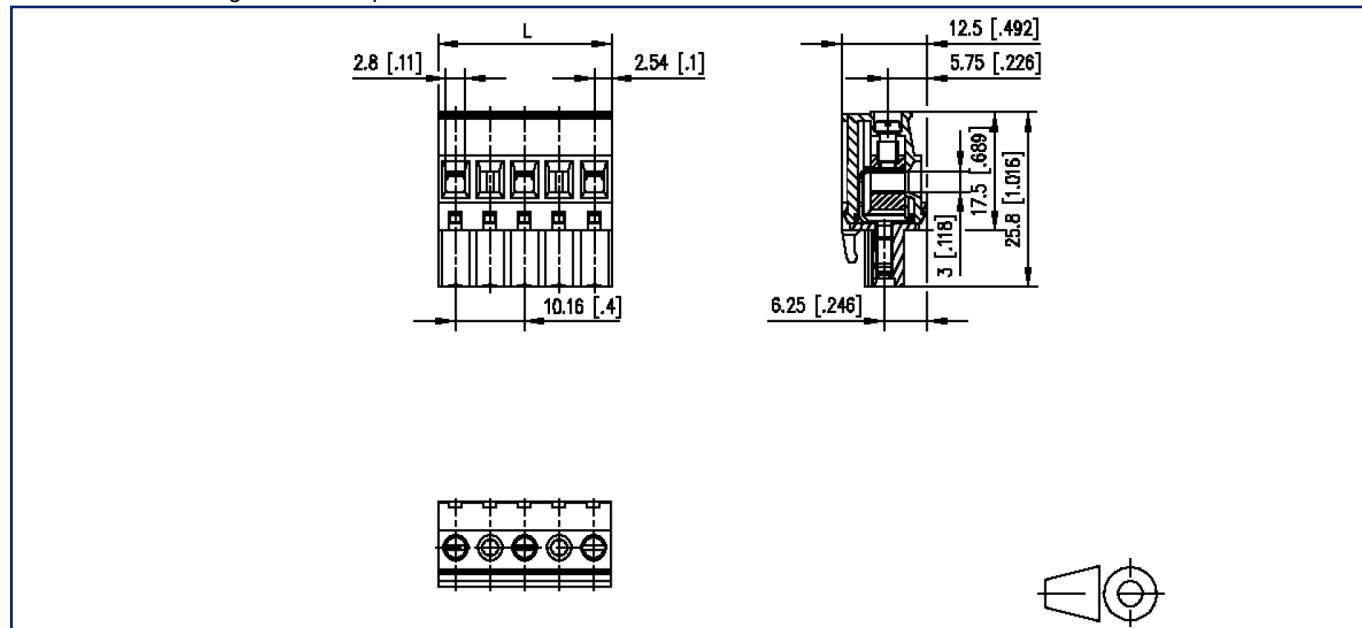
xx=number of poles

2025/04/29

Version: P

Illustrations

Dimensional drawing as an example



$L = (\text{pole size} - 1) \times \text{centerline} + 5.08 \text{ mm [0.2]}$

