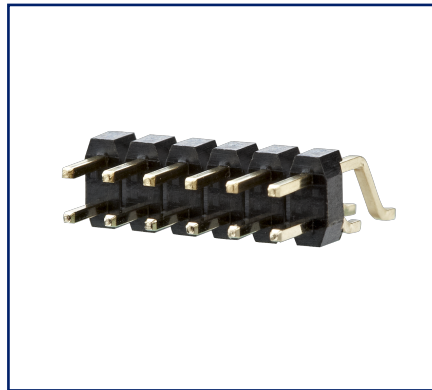
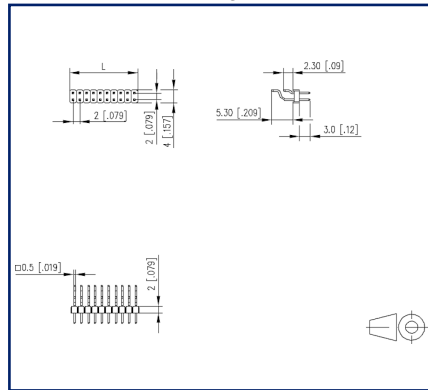


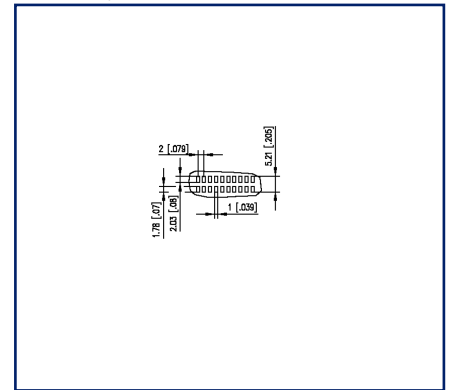
Illustrations



Dimensional drawing



PCB-Layout



See enlarged drawings at the end of document

Product specification

- pin header, SMT solderable
- centerline 2.00 mm, direction of connection 90°
- color black
- Tape & Reel packaging possible
- dual rows

Technical Data

General Data

| | |
|----------------------|------|
| min. number of poles | 2 |
| max. number of poles | 40 |
| Protection category | IP00 |
| Rated current | 1 A |

Material

| | |
|-----------------------------|---------------|
| insulating material | PE-HT |
| contact pin material | CuZn |
| contact pin surface | Ni + Au Flash |
| Glow-Wire Flammability GWFI | - |
| Glow-Wire Flammability GWIT | - |
| REACH | compliant |

Climatic Data

| | |
|-------------------------|--------|
| upper limit temperature | 105 °C |
| lower limit temperature | -40 °C |

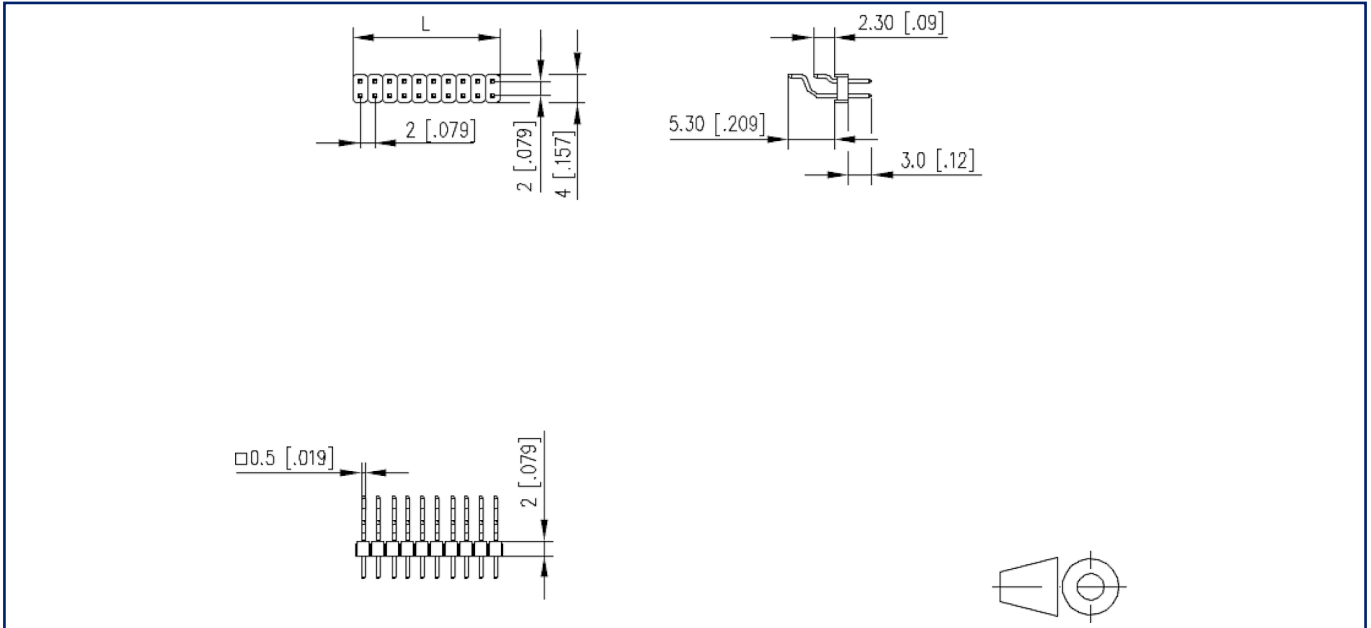
general

| | |
|---------------|------------------------------------|
| Tolerance | ISO 2768 -mH |
| Solderability | Acc. to IPC/JEDEC J-STD-020D-MSL 1 |



Illustrations

Dimensional drawing



$L = (\text{pole size} - 1) \times \text{centerline} + 2 \text{ mm } [0.079]$

Illustrations

PCB-Layout

