

Data sheet

RP019xxWBLC Type 049

Page 1/6

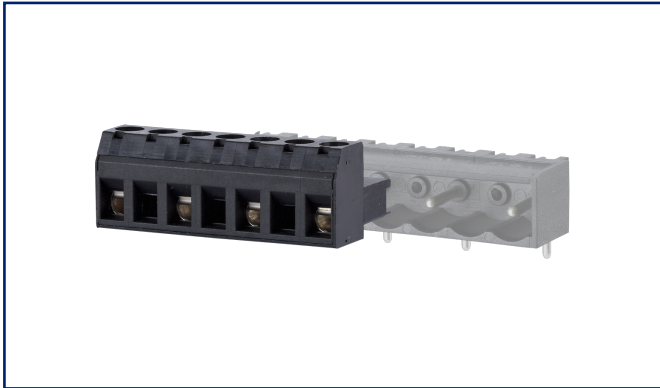
P/N
310492xx

xx=number of poles

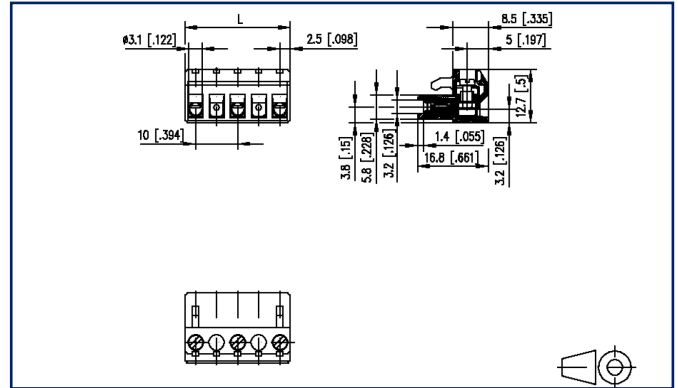
2025/08/21

Version: X

Illustrations



Dimensional drawing as an example



See enlarged drawings at the end of document

Product specification

- screw type terminal block, pluggable
- centerline 10.00 mm, direction of connection vertical 0°
- lift system, fittable without loss of poles
- color black

Data sheet
RP019xxWBLC Type 049

P/N
310492xx
xx=number of poles
2025/08/21
Version: X

Technical Data



General Data

Tightening torque SEV	0.5 Nm		
Tightening torque UL	4.4 lb-in		
min. number of poles	2		
max. number of poles	12		
Insulating material class	CTI 600		
clearance/creepage dist.	9.07 mm		
Protection category	IP20		
Insul. strip length	6 mm		
Rated current	10 A		
Overvoltage category	III	III	II
Pollution degree	3	2	2
Rated voltage	500 V	1000 V	1000 V
Rated test voltage	6 kV	6 kV	6 kV

Terminal data

rat.wiring solid AWGmax	0.33 mm ² - 2.5 mm ² / AWG 22 - AWG 12		
rat.wiring strand.AWGmax	0.33 mm ² - 2.5 mm ² / AWG 22 - AWG 12		

Approvals

 V / A / AWG	600 / 15 / 22 - 12		
approval UL - File No.	E121004		
	630 V / 6 kV / 13.5 A		

Material

insulating material	PA66
flammability class	V0
contact material	CuBe
Contact surface	Ni + Ag
terminal body thread	M3
terminal body material	CuZnPb
terminal body surface	Ni
screw thread	M3
screw material	8,8

Data sheet
RP019xxWBLC Type 049

Page 3/6

P/N
310492xx

xx=number of poles

2025/08/21

Version: X

Technical Data

screw surface	Zn Cr(VI)-frei/free
wire protector material	CuNiZn
Glow-Wire Flammability GWFI	960 °C acc. to IEC 60695-2-12
Glow-Wire Flammability GWIT	775 °C acc. to IEC 60695-2-13

Climatic Data

upper limit temperature	105 °C
lower limit temperature	-40 °C

general

Tolerance	ISO 2768 -mH
-----------	--------------

Application note

This product is a standard product of METZ CONNECT. METZ CONNECT is not aware of the specific intended use of the goods by the Customer or any customers of the Customer. The Customer guarantees that it has fully and sufficiently tested the use of the goods and any product modifications, product changes or product enhancements with regard to the specific intended use in accordance with the state of the art or in any other way. At METZ CONNECT's request, the Customer shall submit and make available meaningful evidence (e.g. test and laboratory protocols, certifications, etc.).



Data sheet
RP019xxWBLC Type 049

Page 4/6

P/N
310492xx

xx=number of poles

2025/08/21

Version: X

Accessories

P/N	Designation
716906	Coding comb orange



Data sheet
RP019xxWBLC Type 049

Page 5/6

P/N
310492xx

xx=number of poles

2025/08/21

Version: X

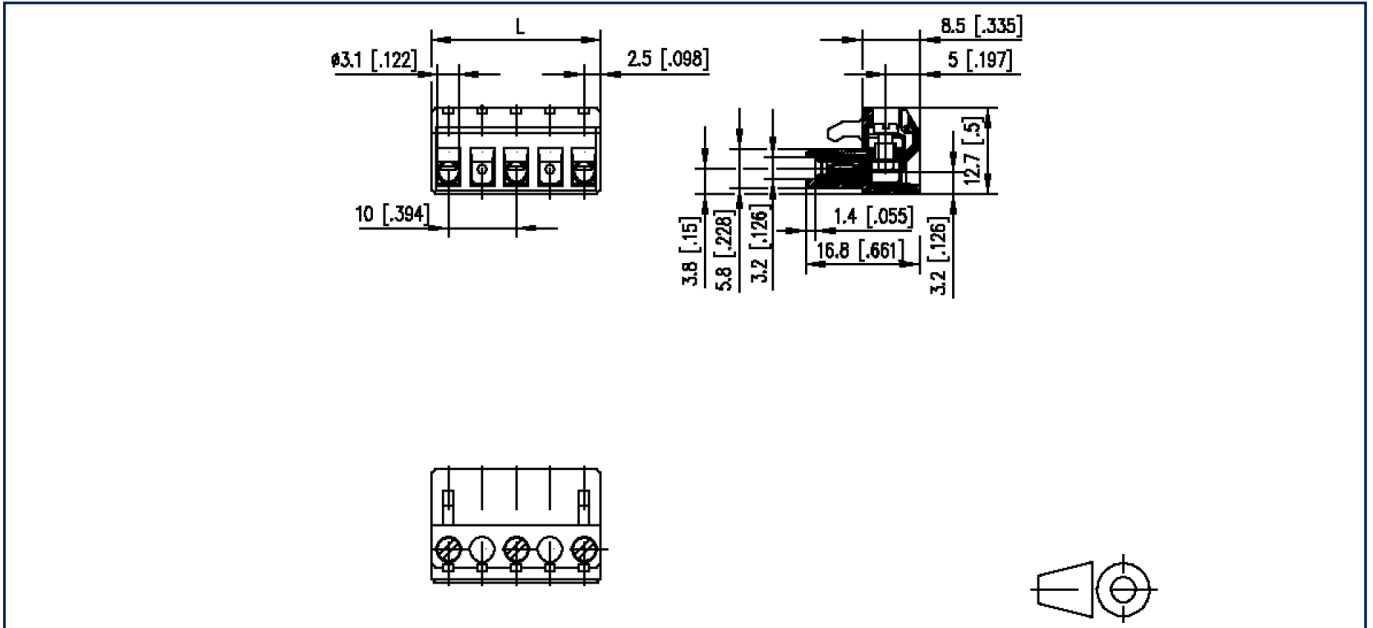
Counterpart

P/N	Designation
310192	PT049xxVBEC Typ 019
310202	PT049xxVBBN Type 020
310292	PT049xxHBEC Typ 029
310302	PT049xxHBBN Type 030

Data sheet
RP019xxWBLC Type 049

Illustrations

Dimensional drawing as an example



$L = (\text{pole size} - 1) \times \text{centerline} + 5 \text{ mm}$ [0.197]