

# Data sheet

## RP034xxHBLO Type 113

Page 1/5

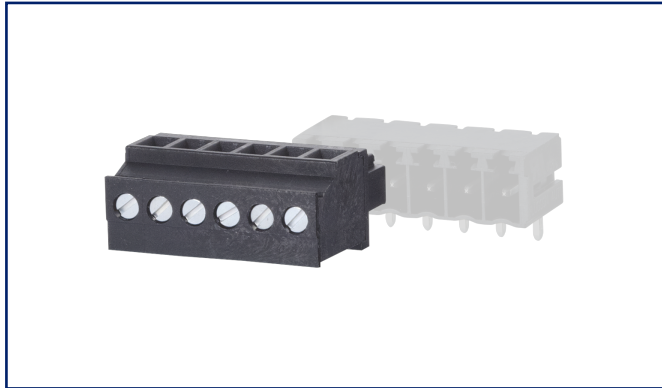
P/N  
311131xx

xx=number of poles

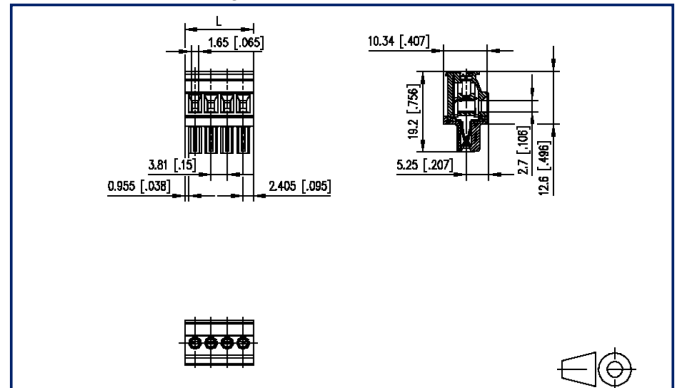
2025/08/21

Version: Y

### Illustrations



Dimensional drawing as an example



See enlarged drawings at the end of document

### Product specification

- screw type terminal block, pluggable
- centerline 3.81 mm, direction of connection 90°
- lift system
- color black
- wire entry codeable side perpendicular to plug direction



**Data sheet**  
**RP034xxHBLO Type 113**

**Technical Data**

**General Data**

Tightening torque SEV	0.25 Nm		
Tightening torque UL	2.2 lb-in		
min. number of poles	2		
max. number of poles	21		
Insulating material class	CTI 600		
clearance/creepage dist.	2.9 mm		
Protection category	IP20		
Insul. strip length	7 mm		
Rated current	9 A		
Overvoltage category	III	III	II
Pollution degree	3	2	2
Rated voltage	40 V	250 V	250 V
Rated test voltage	2.5 kV	2.5 kV	2.5 kV

**Terminal data**


rat.wiring solid AWGmax	0.08 mm <sup>2</sup> - 2 mm <sup>2</sup> / AWG 28 - AWG 14		
rat.wiring strand.AWGmax	0.08 mm <sup>2</sup> - 1.5 mm <sup>2</sup> / AWG 28 - AWG 16		

**Approvals**

extended wiring UL	Wire range extended to 14 AWG solid only.		
--------------------	---	--	--

 V / A / AWG	300 / 11 / 28 - 16		
---	--------------------	--	--

approval UL - File No.	E121004		
------------------------	---------	--	--

	160 V / 2.5 kV / 9 A		
---	----------------------	--	--

**Material**

insulating material	PA66		
flammability class	V0		
contact material	CuSn		
Contact surface	Sn		
terminal body thread	M2		
terminal body material	CuZnPb		
terminal body surface	Ni		
screw thread	M2		

# Data sheet

## RP034xxHBLO Type 113

Page 3/5

P/N  
311131xx

xx=number of poles

2025/08/21

Version: Y

### Technical Data

screw material	8,8
screw surface	Zn Cr(VI)-frei/free
Glow-Wire Flammability GWFI	960 °C acc. to IEC 60695-2-12
Glow-Wire Flammability GWIT	775 °C acc. to IEC 60695-2-13

### Climatic Data

upper limit temperature	105 °C
lower limit temperature	-40 °C

### general

Tolerance	ISO 2768 -mH
-----------	--------------

### Application note

This product is a standard product of METZ CONNECT. METZ CONNECT is not aware of the specific intended use of the goods by the Customer or any customers of the Customer. The Customer guarantees that it has fully and sufficiently tested the use of the goods and any product modifications, product changes or product enhancements with regard to the specific intended use in accordance with the state of the art or in any other way. At METZ CONNECT's request, the Customer shall submit and make available meaningful evidence (e.g. test and laboratory protocols, certifications, etc.).

Data sheet  
RP034xxHBLO Type 113

Page 4/5

P/N  
311131xx

xx=number of poles

2025/08/21

Version: Y

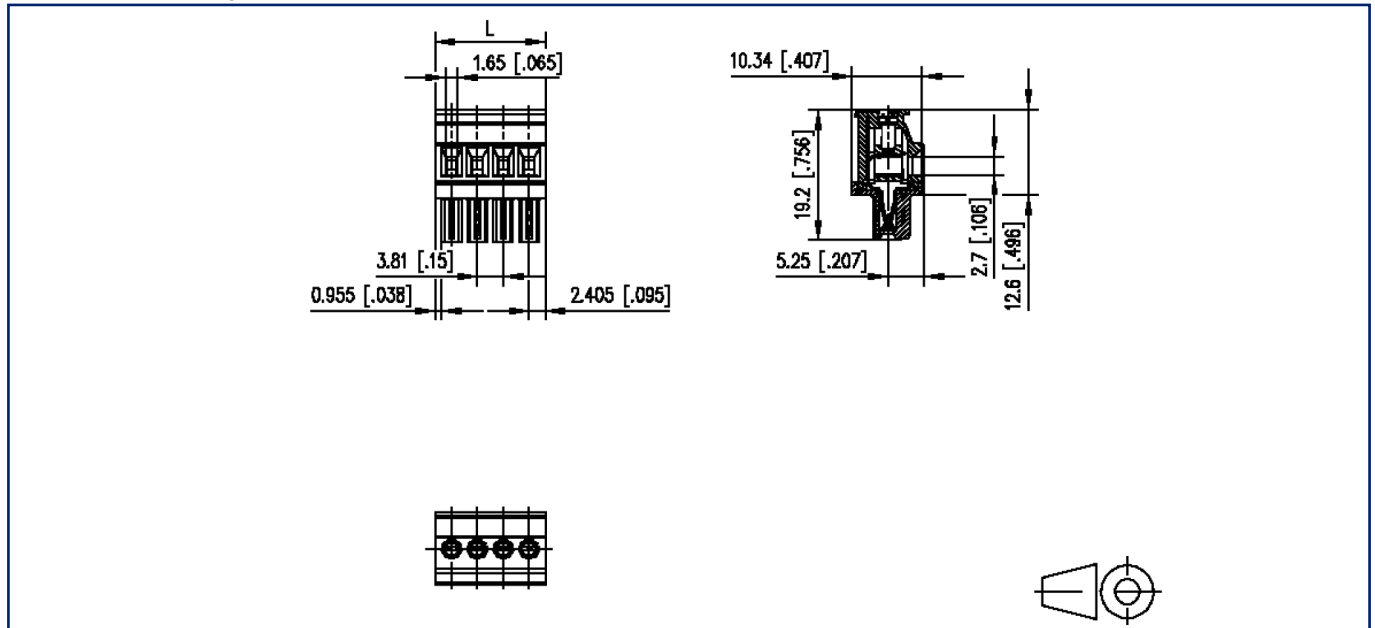
## Counterpart

P/N	Designation
311901	PR044xxHBBN Type 190
311911	PR044xxVBBN Type 191
313821	PT094xxHBBN Type 382
313831	PT094xxVBBN Type 383

Data sheet  
**RP034xxHBLO Type 113**

**Illustrations**

Dimensional drawing as an example



$L = (\text{pole size} - 1) \times \text{centerline} + 4.81 \text{ mm} [0.189]$

