

Data sheet

RP023xxHBWC Type 166

Page 1/6

P/N

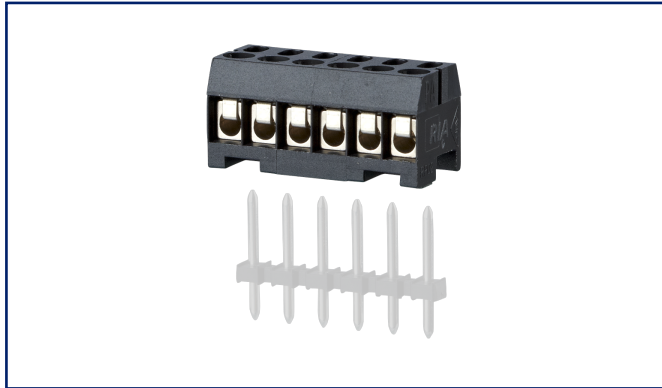
311661xx

xx=number of poles

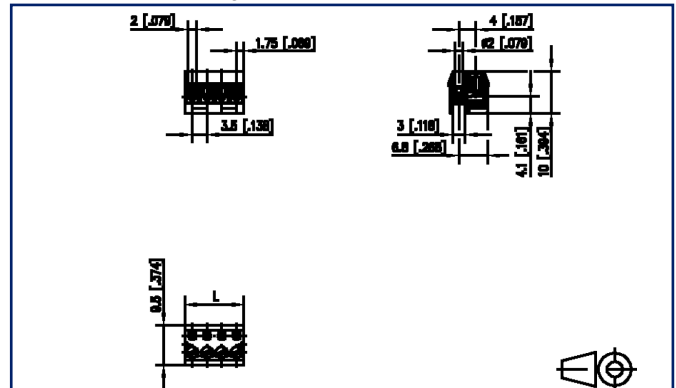
2025/04/16

Version: AC

Illustrations



Dimensional drawing as an example



See enlarged drawings at the end of document

Product specification

- screw type terminal block, pluggable
- centerline 3.50 mm, direction of connection 90°
- wire protector, fittable without loss of poles
- color black
- Wire entry perpendicular to plug direction



Technical Data


General Data


Tightening torque SEV	0.15 Nm		
Tightening torque UL	1.3 lb-in		
min. number of poles	2		
max. number of poles	24		
Insulating material class	CTI 600		
clearance/creepage dist.	2 mm		
Protection category	IP00		
Insul. strip length	5 mm		
Rated current	6 A		
Overvoltage category	III	III	II
Pollution degree	3	2	2
Rated voltage	32 V	250 V	250 V
Rated test voltage	2.5 kV	2.5 kV	2.5 kV

Terminal data

rat.wiring solid AWGmax	0.08 mm ² - 1.5 mm ² / AWG 28 - AWG 16		
rat.wiring strand.AWGmax	0.08 mm ² - 1.5 mm ² / AWG 28 - AWG 16		

Approvals

 V / A / AWG	125 / 8 / 28 - 16		
approval UL - File No.	E121004		

 1 mm ²	200 V / 2.5 kV / 6 A		
---	----------------------	--	--

Material

insulating material	PA66		
flammability class	V0		
contact material	CuNiZn		
terminal body thread	M2		
terminal body material	CuZnPb		
terminal body surface	Ni		
screw thread	M2		
screw material	8,8		
screw surface	Zn Cr(VI)-frei/free		

Technical Data

wire protector material	CuNiZn
Glow-Wire Flammability GWFI	850 °C acc. to IEC 60695-2-12
Glow-Wire Flammability GWIT	775 °C acc. to IEC 60695-2-13

Climatic Data

upper limit temperature	105 °C
lower limit temperature	-40 °C

general

Tolerance	ISO 2768 -mH
-----------	--------------

Application note

This product is a standard product of METZ CONNECT. METZ CONNECT is not aware of the specific intended use of the goods by the Customer or any customers of the Customer. The Customer guarantees that it has fully and sufficiently tested the use of the goods and any product modifications, product changes or product enhancements with regard to the specific intended use in accordance with the state of the art or in any other way. At METZ CONNECT's request, the Customer shall submit and make available meaningful evidence (e.g. test and laboratory protocols, certifications, etc.).



Accessories

P/N	Designation
720158-01-0	Befestigungsflansch kurz LP1mm für Typ 165, 166 F_Befest_165_brg_kurz 1mm
720158-01-2	720158
720158-02-2	Mounting flange for type 166
720159-01-0	Kodierstift kurz für Typ 165, 166 F_Kodier_Typ165_brg_kurz
720159-01-2	Coding pin short for type 166
720159-02-0	Kodierstift lang für Typ 165, 166 F_Kodier_Typ165_brg_lang
720159-02-2	Coding pin long for type 166



U | Contact

Data sheet
RP023xxHBWC Type 166

Page 5/6

P/N
311661xx

xx=number of poles

2025/04/16

Version: AC

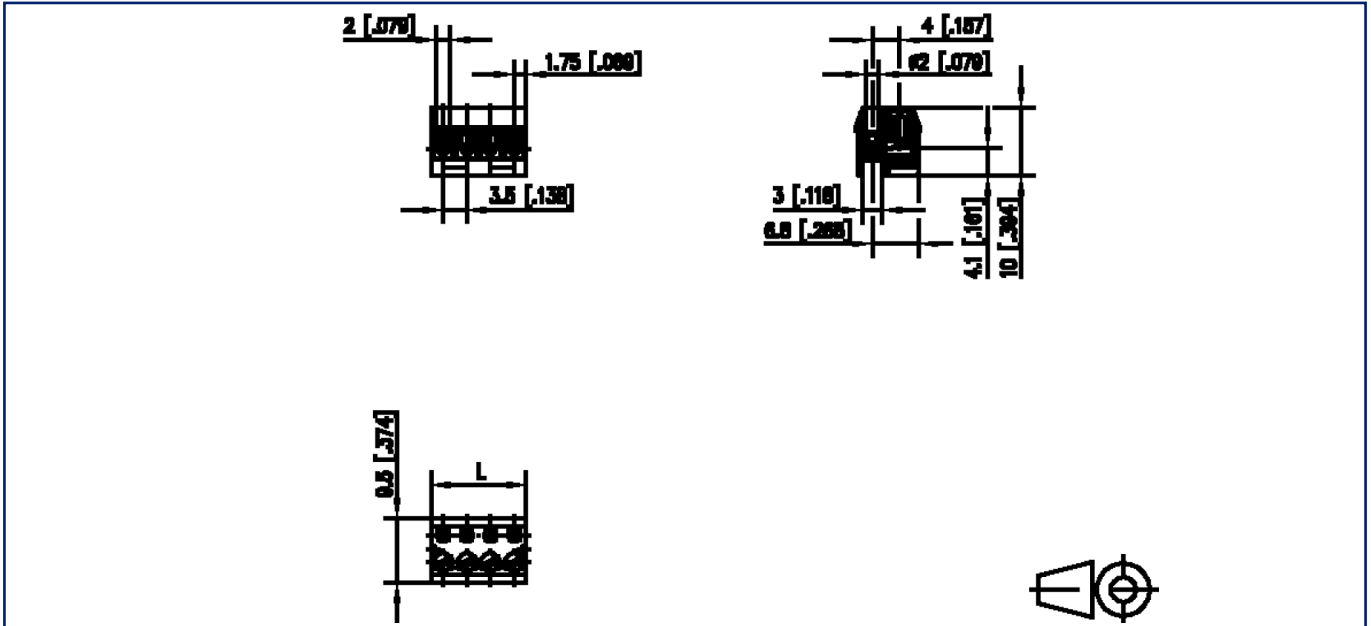
Counterpart

P/N	Designation
312241	PR033xxVBHC Type 224
312251	PT153xxHBEC Typ 225
312261	PT153xxVBEC Type 226
313331	PT023xxHBHC
314241	PM013xxVBHC Type 424



Illustrations

Dimensional drawing as an example



$L = (\text{pole size} - 1) \times \text{centerline} + 3.5 \text{ mm [0.138]}$