

Data sheet

PR044xxVBBF Type 391

Page 1/7

P/N

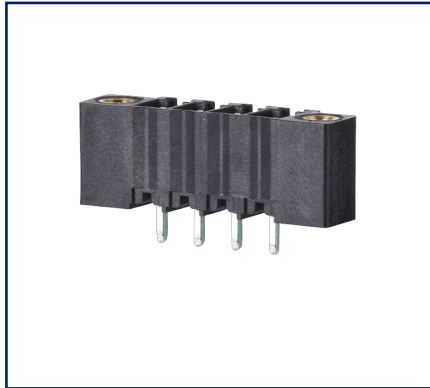
313911xx57

xx=number of poles

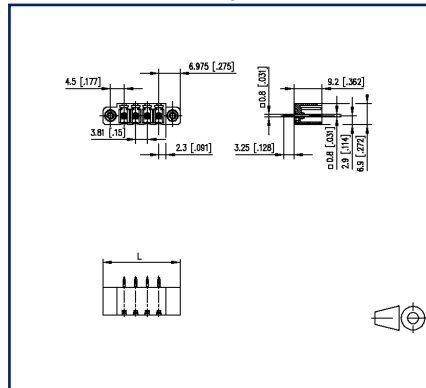
2025/04/30

Version: AA

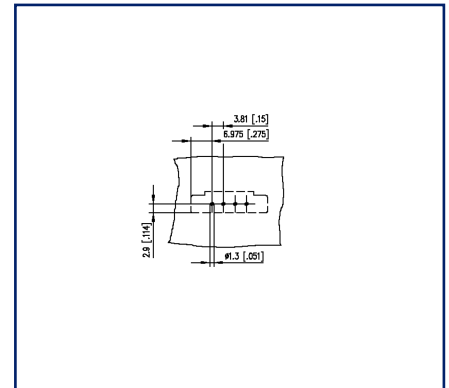
Illustrations



Dimensional drawing as an example



Drill pattern as an example



See enlarged drawings at the end of document

Product specification

- pin header, THR solderable
- centerline 3.81 mm, direction of connection vertical 0°
- closed ends
- color black, mounting flange
- Tape & Reel packaging possible
- codeable



U | Contact

Data sheet PR044xxVBBF Type 391

Page 2/7

P/N
313911xx57

xx=number of poles

2025/04/30



Version: AA

Technical Data

General Data

Solder pin length	3.25 mm		
min. number of poles	2		
max. number of poles	16		
Insulating material class	CTI 600		
clearance/creepage dist.	3.01 mm		
Protection category	IP00		
Rated current	10 A		
Overvoltage category	III	III	II
Pollution degree	3	2	2
Rated voltage	200 V	500 V	500 V
Rated test voltage	4 kV	4 kV	4 kV

Approvals

 V / A	300 / 8
approval UL - File No.	E121004
	130 V / 250 kV / 10 A / 0.8 x 0.8 mm

Material

insulating material	PA46
flammability class	V0
contact pin material	CuMg
contact pin surface	Ni + Sn
Glow-Wire Flammability GWFI	-
Glow-Wire Flammability GWIT	-

Climatic Data

upper limit temperature	260 °C
lower limit temperature	-40 °C

general

Tolerance	ISO 2768 -mH
Solderability	reflowable

Application note

U | Contact

Data sheet**Page 3/7****PR044xxVBBF Type 391****P/N****313911xx57****xx=number of poles**

2025/04/30

Version: AA

Technical Data

This product is a standard product of METZ CONNECT. METZ CONNECT is not aware of the specific intended use of the goods by the Customer or any customers of the Customer. The Customer guarantees that it has fully and sufficiently tested the use of the goods and any product modifications, product changes or product enhancements with regard to the specific intended use in accordance with the state of the art or in any other way. At METZ CONNECT's request, the Customer shall submit and make available meaningful evidence (e.g. test and laboratory protocols, certifications, etc.).



U | Contact

Data sheet

PR044xxVBBF Type 391

Page 4/7

P/N

313911xx57**xx=number of poles**

2025/04/30

Version: AA

Accessories

P/N	Designation
720293-01-2	Coding Star for pin header, centerline 3.81 mm



U | Contact

Data sheet

PR044xxVBBF Type 391

Page 5/7

P/N

313911xx57

xx=number of poles

2025/04/30

Version: AA

Counterpart of

P/N	Designation
313791	RP034xxVBLF Type 379
ASP084	SP064xxVGNF ASP084



U | Contact

Data sheet

PR044xxVBBF Type 391

Page 6/7

P/N

313911xx57

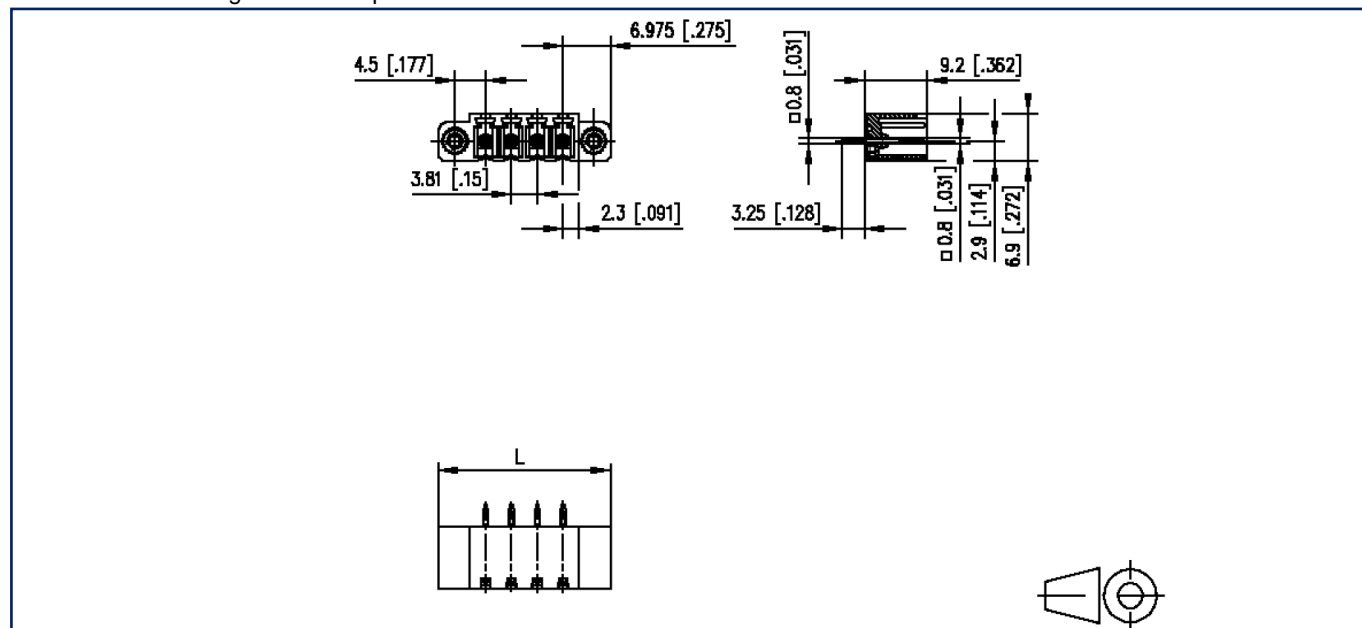
xx=number of poles

2025/04/30

Version: AA

Illustrations

Dimensional drawing as an example



$L = (\text{pole size} - 1) \times \text{centerline} + 13.95 \text{ mm} [0.549]$

U | Contact

Data sheet

PR044xxVBBF Type 391

Page 7/7

P/N

313911xx57

xx=number of poles

2025/04/30

Version: AA

Illustrations

Drill pattern as an example

