

## Data sheet

### PM013xxVBHC Type 424

Page 1/5

P/N

314241xx22

xx=number of poles

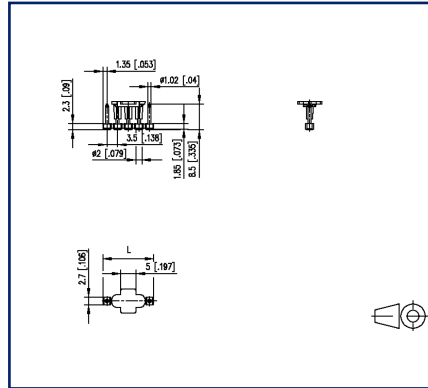
2024/12/05

Version: F

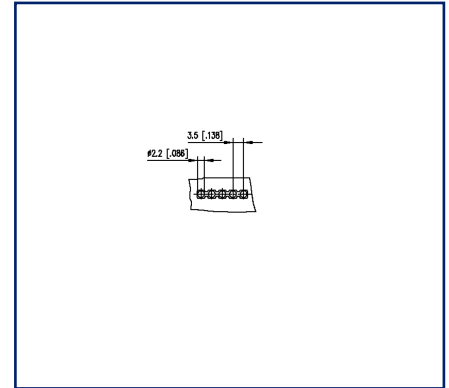
## Illustrations



Dimensional drawing as an example



PCB-Layout



See enlarged drawings at the end of document

## Product specification

- pin header, SMT solderable
- centerline 3.50 mm, direction of connection vertical 0°
- fittable without loss of poles
- color black
- Tape & Reel packaging



## Data sheet PM013xxVBHC Type 424

Page 2/5

P/N  
314241xx22

xx=number of poles

2024/12/05

Version: F

### Technical Data

#### General Data

|                           |         |        |        |
|---------------------------|---------|--------|--------|
| min. number of poles      | 2       |        |        |
| max. number of poles      | 12      |        |        |
| Insulating material class | CTI 400 |        |        |
| clearance/creepage dist.  | 1.5 mm  |        |        |
| Protection category       | IP00    |        |        |
| Rated current             | 12 A    |        |        |
| Overvoltage category      | III     | III    | II     |
| Pollution degree          | 3       | 2      | 2      |
| Rated voltage             | 32 V    | 200 V  | 200 V  |
| Rated test voltage        | 2.5 kV  | 2.5 kV | 2.5 kV |

#### Approvals

|   |          |
|---|----------|
|  V / A | 300 / 15 |
| approval UL - File No.  | E121004  |

#### Material

|                             |         |
|-----------------------------|---------|
| insulating material         | PA46    |
| flammability class          | V0      |
| contact pin material        | CuZnPb  |
| contact pin surface         | Ni + Sn |
| Glow-Wire Flammability GWFI | -       |
| Glow-Wire Flammability GWIT | -       |

#### Climatic Data

|                         |        |
|-------------------------|--------|
| upper limit temperature | 125 °C |
| lower limit temperature | -40 °C |

#### general

|               |              |
|---------------|--------------|
| Tolerance     | ISO 2768 -mH |
| Solderability | reflowable   |

#### Application note

This product is a standard product of METZ CONNECT. METZ CONNECT is not aware of the specific intended use of the goods by the Customer or any customers of the Customer. The Customer guarantees that it has fully and sufficiently tested the use of the goods and any product modifications, product changes or product enhancements with regard to the specific intended use in accordance with the state of the art or in any other way. At METZ CONNECT's request, the Customer shall submit and make available meaningful evidence (e.g. test and laboratory protocols, certifications, etc.).

# U | Contact

Data sheet

PM013xxVBHC Type 424

Page 3/5

P/N

314241xx22

xx=number of poles

2024/12/05

Version: F

## Counterpart of

| P/N    | Designation          |
|--------|----------------------|
| 311661 | RP023xxHBWC Type 166 |

# U | Contact

Data sheet

PM013xxVBHC Type 424

Page 4/5

P/N

314241xx22

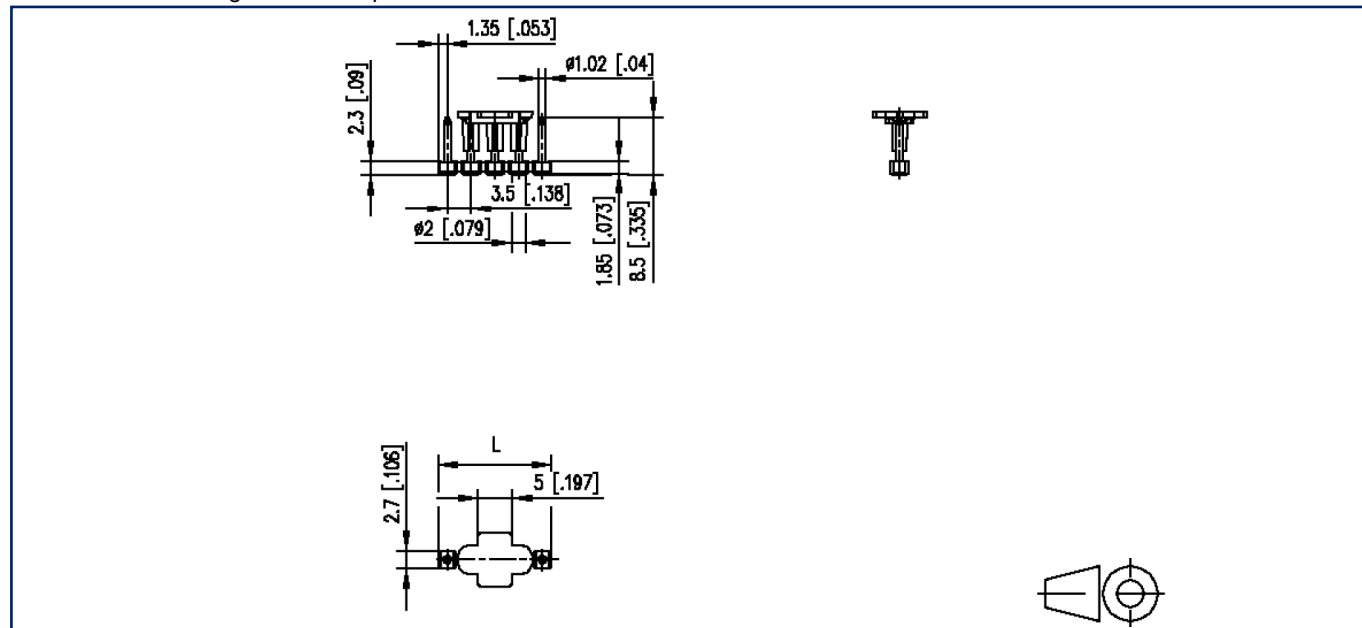
xx=number of poles

2024/12/05

Version: F

## Illustrations

Dimensional drawing as an example



$L = (\text{pole size} - 1) \times \text{centerline} + 2.7 \text{ mm} [0.106]$



# U | Contact

Data sheet

PM013xxVBHC Type 424

Page 5/5

P/N

314241xx22

xx=number of poles

2024/12/05

Version: F

## Illustrations

PCB-Layout

