

Data sheet

SP044xxVBNN ASP044

Page 1/5

P/N

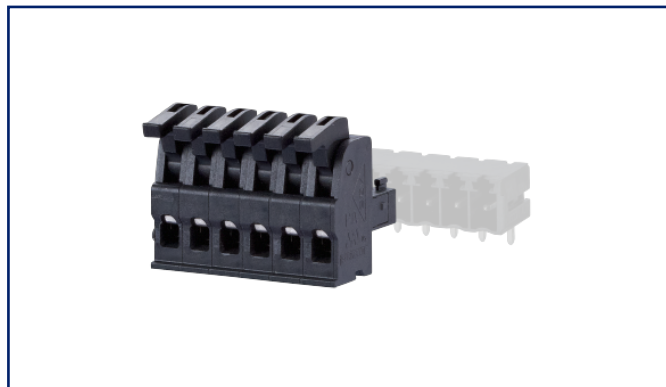
ASP044xx22

xx=number of poles

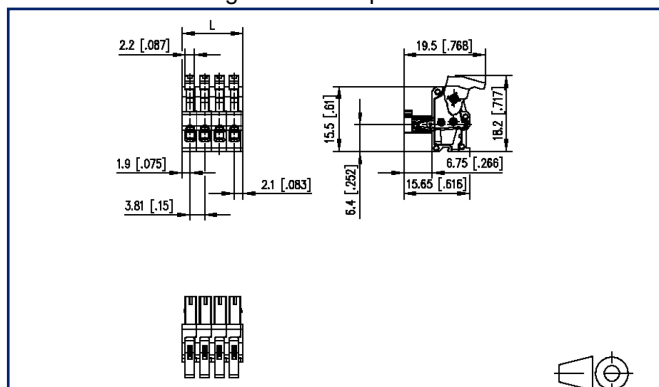
2025/04/30

Version: U

Illustrations



Dimensional drawing as an example



See enlarged drawings at the end of document

Product specification

- spring clamp terminal block, pluggable
- centerline 3.81 mm, direction of connection vertical 0°
- color black
- eccentric lever, wire entry uncodeable side parallel to plug direction





U | Contact

Data sheet SP044xxVBNN ASP044

Page 2/5

P/N
ASP044xx22
xx=number of poles
2025/04/30
Version: U

Technical Data

General Data			
min. number of poles	2		
max. number of poles	12		
Insulating material class	CTI 400		
clearance/creepage dist.	2.6 mm		
Protection category	IP20		
Insul. strip length	6 mm		
Rated current	10 A		
Overvoltage category	III	III	II
Pollution degree	3	2	2
Rated voltage	32 V	200 V	200 V
Rated test voltage	2.5 kV	2.5 kV	2.5 kV
Terminal data			
rat.wiring solid AWGmax	0.08 mm² - 1.5 mm² / AWG 28 - AWG 16		
rat.wiring strand.AWGmax	0.08 mm² - 1.5 mm² / AWG 28 - AWG 16		
Approvals			
 V / A	150 / 10		
approval UL - File No.	E121004		
	130 V / 2.5 kV / 10 A		
Material			
insulating material	PA46		
flammability class	V0		
spring material	Spring steel		
contact material	CuSn		
Contact surface	Sn		
Glow-Wire Flammability GWFI	-		
Glow-Wire Flammability GWIT	-		
Climatic Data			
upper limit temperature	105 °C		
lower limit temperature	-40 °C		
general			

U | Contact

Data sheet

Page 3/5

SP044xxVBNN ASP044

P/N

ASP044xx22**xx=number of poles**

2025/04/30

Version: U

Technical Data

Tolerance

ISO 2768 -mH

Application note

This product is a standard product of METZ CONNECT. METZ CONNECT is not aware of the specific intended use of the goods by the Customer or any customers of the Customer. The Customer guarantees that it has fully and sufficiently tested the use of the goods and any product modifications, product changes or product enhancements with regard to the specific intended use in accordance with the state of the art or in any other way. At METZ CONNECT's request, the Customer shall submit and make available meaningful evidence (e.g. test and laboratory protocols, certifications, etc.).



U | Contact

Data sheet

SP044xxVBNN ASP044

Page 4/5

P/N

ASP044xx22

xx=number of poles

2025/04/30

Version: U

Counterpart

P/N	Designation
311901	PR044xxHBBN Type 190
311911	PR044xxVBNN Type 191
313821	PT094xxHBBN Type 382
313831	PT094xxVBNN Type 383

U | Contact

Data sheet

SP044xxVBNN ASP044

Page 5/5

P/N

ASP044xx22

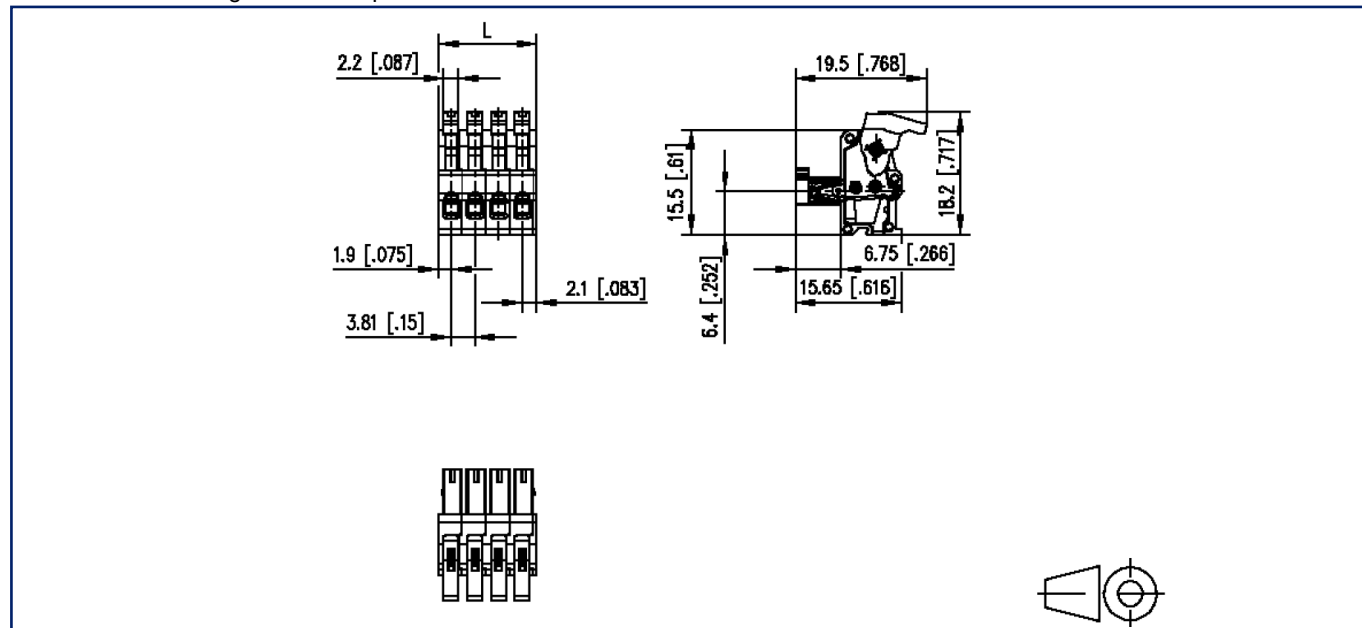
xx=number of poles

2025/04/30

Version: U

Illustrations

Dimensional drawing as an example



$L = (\text{pole size} - 1) \times \text{centerline} + 4 \text{ mm } [0.157]$