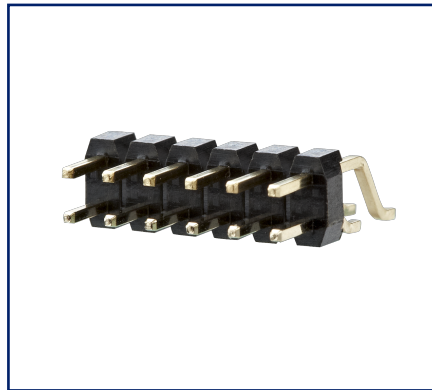


Data sheet PM20CxxHBDN

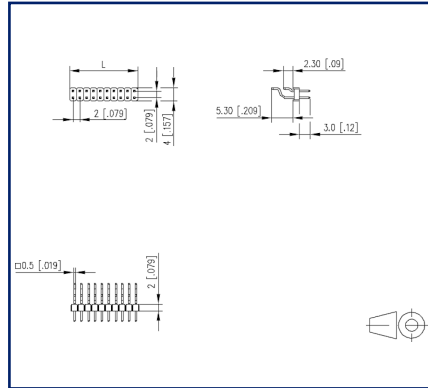
Page 1/4

P/N
PM20CXXHBDN
xx=number of poles
2024/12/09
Version: X

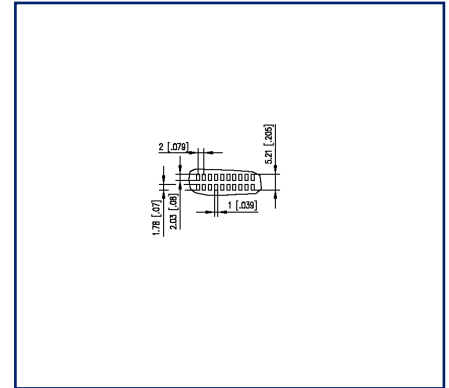
Illustrations



Dimensional drawing as an example



PCB-Layout



See enlarged drawings at the end of document

Product specification

- pin header, SMT solderable
- centerline 2.00 mm, direction of connection 90°
- color black
- Tape & Reel packaging possible
- dual rows



U | Contact

Data sheet PM20CxxHBDN

Page 2/4

P/N
PM20CXXHBDN
xx=number of poles
2024/12/09
Version: X

Technical Data

General Data	
min. number of poles	2
max. number of poles	40
Protection category	IP00
Rated current	1 A
Material	
insulating material	PE-HT
contact pin material	CuZn
contact pin surface	Ni + Au Flash
Glow-Wire Flammability GWFI	-
Glow-Wire Flammability GWIT	-
Climatic Data	
upper limit temperature	105 °C
lower limit temperature	-40 °C
general	
Tolerance	ISO 2768 -mH
Solderability	reflowable

Application note

This product is a standard product of METZ CONNECT. METZ CONNECT is not aware of the specific intended use of the goods by the Customer or any customers of the Customer. The Customer guarantees that it has fully and sufficiently tested the use of the goods and any product modifications, product changes or product enhancements with regard to the specific intended use in accordance with the state of the art or in any other way. At METZ CONNECT's request, the Customer shall submit and make available meaningful evidence (e.g. test and laboratory protocols, certifications, etc.).

U | Contact

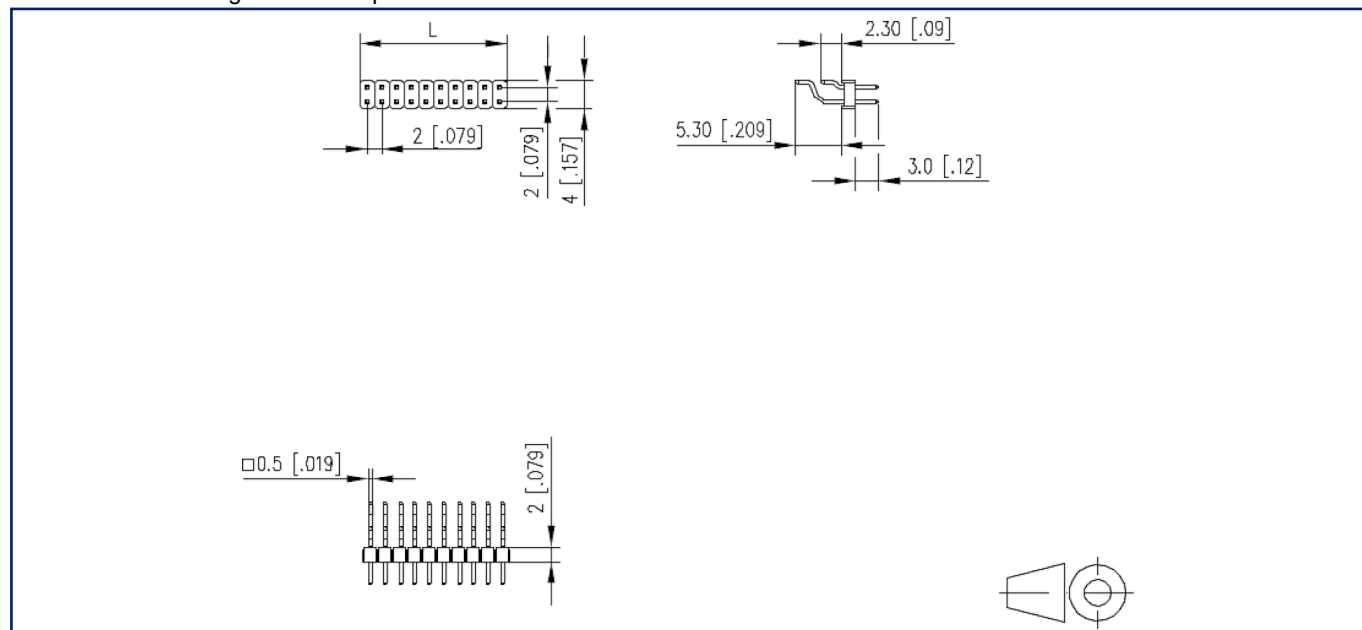
Data sheet PM20CxxHBDN

Page 3/4

P/N
PM20CXXHBDN
xx=number of poles
2024/12/09
Version: X

Illustrations

Dimensional drawing as an example



$L = (\text{pole size} - 1) \times \text{centerline} + 2 \text{ mm } [0.079]$



U | Contact

Data sheet
PM20CxxHBDN

Page 4/4

P/N
PM20CXXHBDN
xx=number of poles
2024/12/09
Version: X

Illustrations

PCB-Layout

